

NIAGARA AIRPORT COMMERCIAL PARK

NIAGARA COUNTY, NY

A NEW YORK STATE SHOVEL READY CERTIFIED SITE

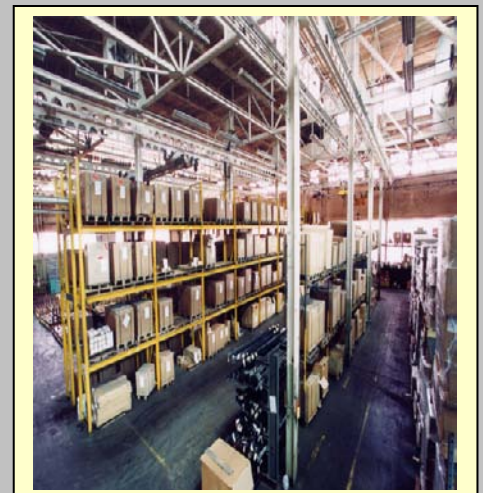
TOWN OF NIAGARA, NEW YORK

The Niagara Airport Commercial Park is a New York State Shovel Ready Approved Site, located on Packard and Lockport Roads in the Town of Niagara, New York in proximity to the Niagara Falls International Airport. This 217 acre park is suitable for high tech and light manufacturing, a logistics center, research & development, and back office operations.



Positioned near Niagara Falls for multimodal opportunities, this 217 acre site in the Town of Niagara, New York, is ideally situated a short distance from the New York State Thruway and the U.S. - Canadian Border. It's competitively priced and ready for your development.

And it's Shovel Ready Certified!



TOWN OF NIAGARA AIRPORT COMMERCIAL PARK

Park Details

Acres Available: 217 acres
County: Niagara County
Former Use: Agricultural
Zoning: Industrial / Commercial
Price: \$50,000 per acre
Lease: N/A
Special Incentives: Tax Abatement Programs
Project Specific Financial Assistance
Other Incentives: Completed New York State Generic
Environmental Impact Statement for SEQR, Water,
Sewer, Electricity and Natural Gas

Access

Closest Highway: Military Road (NY Route 265)
Miles to Highway: 1.2 miles
Closest Interstate: I-190
Miles to Interchange: 1 mile
Access Road: Lockport Road
Closest Airport:
Niagara Falls International Airport - Adjacent
Buffalo Niagara International Airport - 16 miles

Utilities

Water: Niagara County Water District
Sewer: Niagara County Sewer District
Electric: National Grid
Natural Gas: National Fuel
Telecom: Verizon



The Town of Niagara Airport

Commercial Park is a New York State certified “shovel ready” site with access to all utilities including water and sewer, electricity and natural gas.

This site is within the eligibility range of hydropower allocations from the Niagara Project of the New York Power Authority (NYPA). NYPA power is some of the cheapest priced power found anywhere in the United States.

Lower electricity costs will enhance your company’s bottom line.

NIAGARA AIRPORT COMMERCIAL PARK

AERIAL VIEW

TOWN OF NIAGARA, NEW YORK



TOWN OF NIAGARA AIRPORT COMMERCIAL PARK

Contacts

Steven Richards

Supervisor

Town of Niagara

7105 Lockport Road

Niagara Falls, NY 14305

(716) 297-2150

Fax: (716) 297-9262

Website: www.townofniagara.com

Samuel M. Ferraro

Commissioner

Niagara County

Department of Economic Development

6311 Inducon Corporate Drive

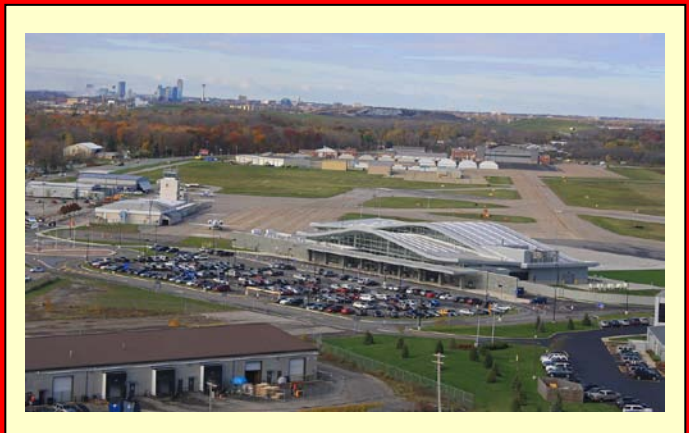
Sanborn, NY 14132

(716) 278-8750

Fax: (716) 278-8757

Website: www.NiagaraCountyBusiness.com

The adjacent Niagara Falls International Airport has a brand new terminal building that contains state of the art Customs & Immigration facilities, three runways, including the 10,000+ foot long main runway that can handle the largest of fully loaded aircraft for takeoff and landing.



The neighboring Niagara Falls Air Reserve Station is home to the 914th Tactical Airlift Wing of the U.S. Air Force Reserve and the 107th Air Refueling Group of the New York State Air National Guard.