

**Date:** 12/01/08

**Current Geography Selection:** (1 Selected) Counties: Niagara County

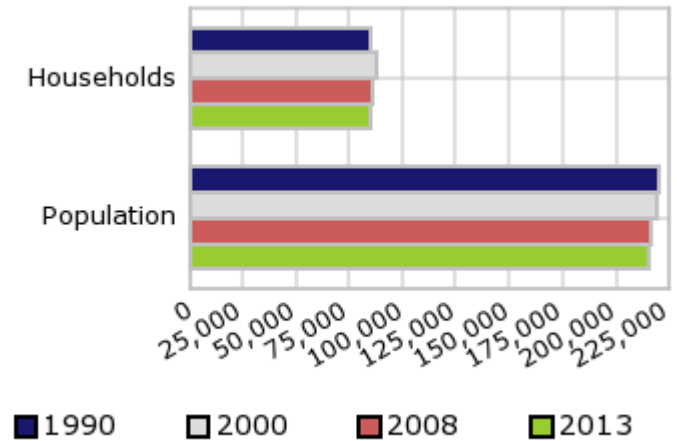
## Executive Summary Report with Charts

### Population Demographics

The number of households in the study area in 1990 was **84,808** and changed to **87,846** in 2000, representing a change of **3.6%**. The household count in 2008 was **85,427** and the household projection for 2013 is **84,583**, a change of **-1.0%**.

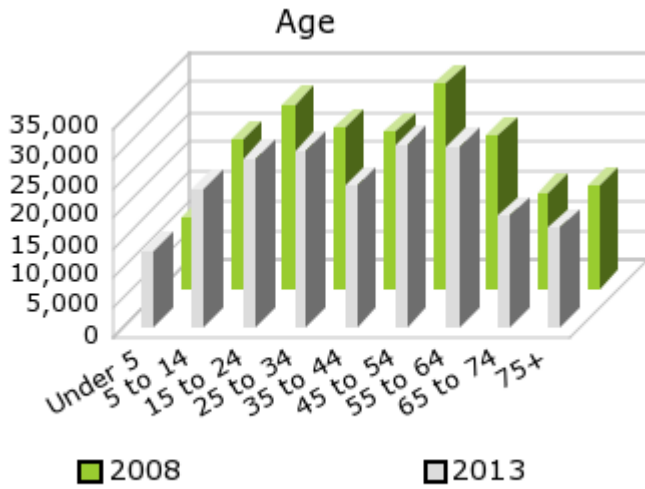
The population in the study area in 1990 was **220,755** and in 2000 it was **219,846**, roughly a **-0.4%** change. The population in 2008 was **216,667** and the projection for 2013 is **215,617** representing a change of **-0.5%**.

Population and Household Change



	<b>1990 Census</b>	<b>2000 Census</b>	<b>2008 Estimate</b>	<b>2013 Projection</b>	<b>Percent Change</b>	
					<b>1990 to 2000</b>	<b>2008 to 2013</b>
Total Population	220,755	219,846	216,667	215,617	-0.4%	-0.5%
Total Households	84,808	87,846	85,427	84,583	3.6%	-1.0%

### Population by Age



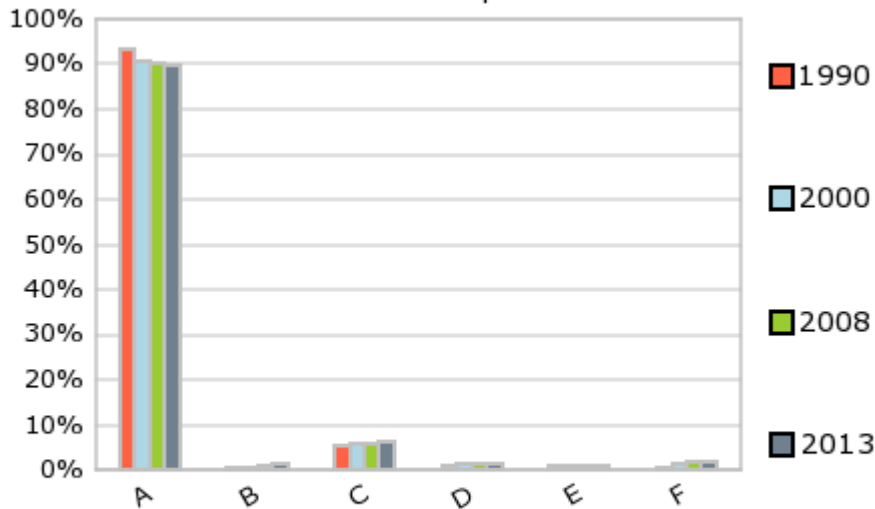
In 1990, the median age of the total population in the study area was **34.6**, and in 2000, it was **38.2**. The median age in 2008 is **40.3** and it is predicted to change in five years to **40.4** years. In 2008, females represented **52.0%** of the population with a median age of **42.1** and males represented **48.0%** of the population with a median age of **38.2** years. In 2008, the most prominent age group in this geography is **Age 45 to 54** years. The age group least represented in this geography is **0 to 4** years.

### Age Groups

Age Groups	1990 Census		2000 Census		2008 Estimate		2013 Projection		Percent Change	
	Count	%	Count	%	Count	%	Count	%	1990 to 2000	2008 to 2013
0 to 4	15,685	7.1%	13,165	6.0%	11,942	5.5%	13,039	6.1%	-16.1%	9.2%
5 to 14	30,688	13.9%	31,546	14.4%	25,159	11.6%	23,246	10.8%	2.8%	-7.6%
15 to 19	14,996	6.8%	15,759	7.2%	15,572	7.2%	13,202	6.1%	5.1%	-15.2%
20 to 24	15,104	6.8%	12,347	5.6%	15,695	7.2%	15,306	7.1%	-18.3%	-2.5%
25 to 34	35,449	16.1%	26,222	11.9%	27,153	12.5%	29,740	13.8%	-26.0%	9.5%
35 to 44	31,792	14.4%	36,208	16.5%	26,723	12.3%	24,120	11.2%	13.9%	-9.7%
45 to 54	22,098	10.0%	30,755	14.0%	34,532	15.9%	30,923	14.3%	39.2%	-10.5%
55 to 64	21,495	9.7%	19,960	9.1%	26,048	12.0%	30,486	14.1%	-7.1%	17.0%
65 to 74	19,941	9.0%	17,236	7.8%	16,339	7.5%	18,747	8.7%	-13.6%	14.7%
75 +	13,514	6.1%	16,648	7.6%	17,499	8.1%	16,788	7.8%	23.2%	-4.1%

### Population by Race/Ethnicity

## Race and Ethnicity Percent Composition



In 2008, the predominant race/ethnicity category in this study area is **White**. The race & ethnicity category least represented in this geography is **Other**.

A: White  
 B: Asian Pac Islr  
 C: Black  
 D: Hispanic  
 E: Amer Indian or Alaska Native  
 F: Other or Multi Race

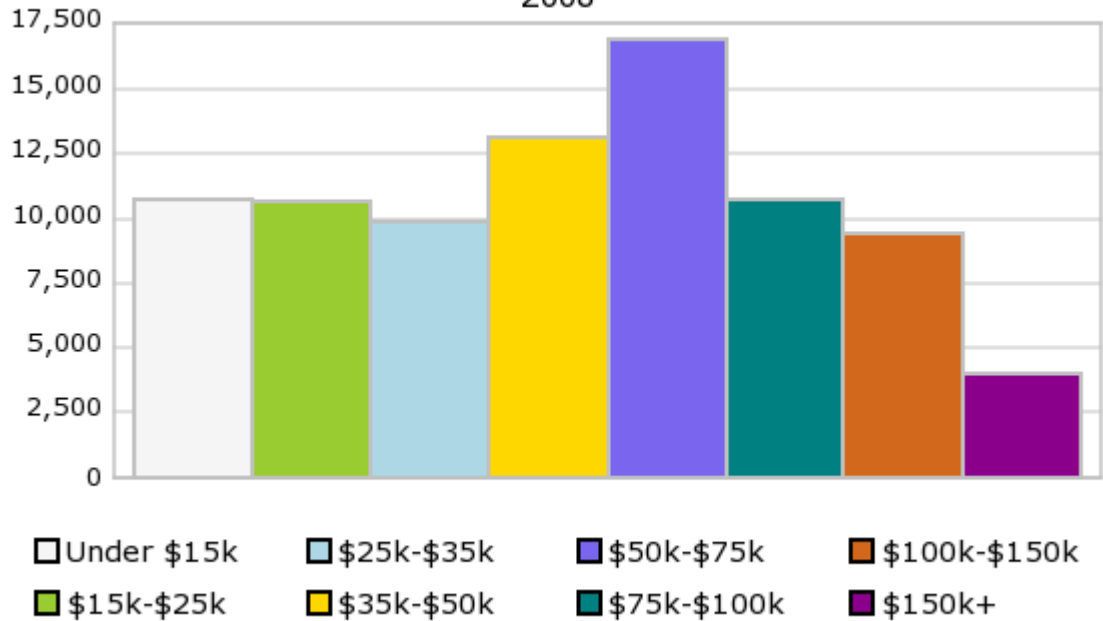
### Race & Ethnicity

	1990		2000		2008		2013		Percent Change	
	Census	%	Census	%	Estimate	%	Projection	%	1990 to 2000	2008 to 2013
White	205,308	93.0%	199,404	90.7%	194,997	90.0%	193,242	89.6%	-2.9%	-0.9%
Black	12,104	5.5%	13,520	6.2%	13,329	6.2%	13,469	6.3%	11.7%	1.1%
American Indian or Alaska Native	2,011	0.9%	2,069	0.9%	1,780	0.8%	1,506	0.7%	2.9%	-15.4%
Asian or Pacific Islander	806	0.4%	1,318	0.6%	2,107	1.0%	2,499	1.2%	63.5%	18.6%
Other Race	527	0.2%	876	0.4%	1,083	0.5%	1,768	0.8%	66.2%	63.3%
Two or More Races			2,659	1.2%	3,371	1.6%	3,133	1.5%		-7.1%
Hispanic Ethnicity	2,098	1.0%	2,913	1.3%	3,427	1.6%	3,680	1.7%	38.8%	7.4%
Not Hispanic or Latino	218,658	99.1%	216,933	98.7%	213,240	98.4%	211,937	98.3%	-0.8%	-0.6%

### Households by Income

## Households by Income Group 2008

In 2008 the predominant household income category in this study area is **\$50K - \$75K**, and the income group that is least represented in this geography is **\$150K +**.



### HH Income Categories

	1990		2000		2008		2013		Percent Change	
	Census	%	Census	%	Estimate	%	Projection	%	1990 to 2000	2008 to 2013
\$0 - \$15,000	21,722	25.6%	15,397	17.5%	10,752	12.6%	9,408	11.1%	-29.1%	-12.5%
\$15,000 - \$24,999	15,531	18.3%	12,941	14.7%	10,618	12.4%	8,850	10.5%	-16.7%	-16.7%
\$25,000 - \$34,999	14,890	17.6%	12,170	13.9%	9,909	11.6%	9,001	10.6%	-18.3%	-9.2%
\$35,000 - \$49,999	16,622	19.6%	14,742	16.8%	13,095	15.3%	12,469	14.7%	-11.3%	-4.8%
\$50,000 - \$74,999	11,670	13.8%	17,288	19.7%	16,894	19.8%	16,596	19.6%	48.1%	-1.8%
\$75,000 - \$99,999	3,068	3.6%	8,469	9.6%	10,756	12.6%	11,116	13.1%	176.0%	3.3%
\$100,000 - \$149,999	914	1.1%	5,331	6.1%	9,393	11.0%	11,312	13.4%	483.3%	20.4%
\$150,000 +	396	0.5%	1,508	1.7%	4,010	4.7%	5,831	6.9%	280.8%	45.4%
Average Hhld Income	\$32,878		\$47,553		\$56,869		\$63,329		44.6%	11.4%
Median Hhld Income	\$28,507		\$38,308		\$47,959		\$53,453		34.4%	11.5%
Per Capita Income	\$12,722		\$19,001		\$23,111		\$25,617		49.4%	10.8%

Current year data is for the year **2008**, 5 year projected data is for the year **2013**. More About Our Data.  
Demographic data © 2008 by Experian/Applied Geographic Solutions.

© 2008. DemographicsNow is brought to you by SRC, LLC.

SRC, DemographicsNow.com and the SRC and DemographicsNow.com logos are trademarks of SRC, LLC. All rights reserved.

Privacy Statement | License Agreement